

ADVICE NOTE 4 - Quality Audits

What is it?

Overarching audit which integrates existing audits

Key Features

- **Transparent process to ensure needs of all users are addressed**
- **Check re delivery of Project Objectives**
- **Balanced resolution of design issues**

Intention not to create another layer of documentation

ADVICE NOTE 4 - Quality Audits

Content of a Quality Audit

Individual Design Audits

- **DMURS Street Design Audit**
- **Road Safety Audit**
- **Other Audits**

Quality Audit Report

ADVICE NOTE 4 - Quality Audits

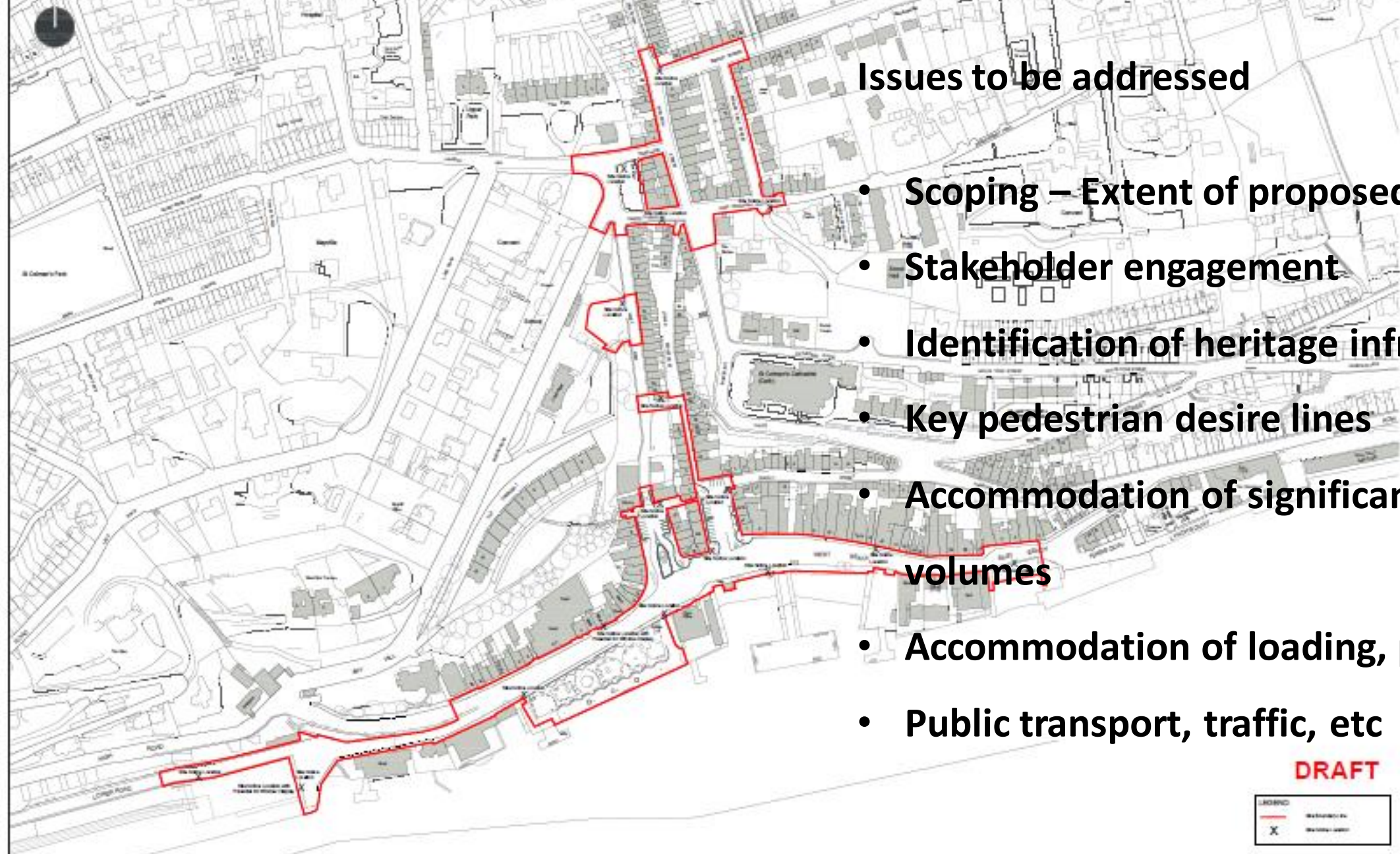
Quality Audit Report or DMURS Street Design Audit?

- **DMURS Street Design Audit is always required**
- **Quality Audit required for larger, more complex projects**
- **Choose audits to suit project**
- **Identify issues which need to be resolved at planning stage**

Quality Audit – Example

Cobh Town Centre Urban Design plan An heritage & placemaking led-plan





Issues to be addressed

- Scoping – Extent of proposed works
- Stakeholder engagement
- Identification of heritage infrastructure
- Key pedestrian desire lines
- Accommodation of significant tourism volumes
- Accommodation of loading, parking, etc
- Public transport, traffic, etc

DRAFT

Legend	Red line	Proposed boundary
	X	Proposed location

CPIU Aboard Parliament Buildings
 CPIU Capital Programs Implementation Unit
 100-1000

DO NOT SCALE FROM THIS DRAWING. ALL DIMENSIONS AND LOCATIONS TO BE SHOWN TO THE CENTER OF GRAVITY UNLESS OTHERWISE SPECIFIED.
 THE DRAWING IS FOR INFORMATION ONLY AND DOES NOT CONSTITUTE A CONTRACT. ALL RIGHTS RESERVED. NO PART OF THIS DRAWING IS TO BE REPRODUCED OR TRANSMITTED IN ANY FORM OR BY ANY MEANS, ELECTRONIC OR MECHANICAL, WITHOUT PERMISSION IN WRITING FROM THE PROJECT MANAGER.

Rev	Description	By	Date

CPIU EXISTING SITE LOCATION & LAYOUT PLAN

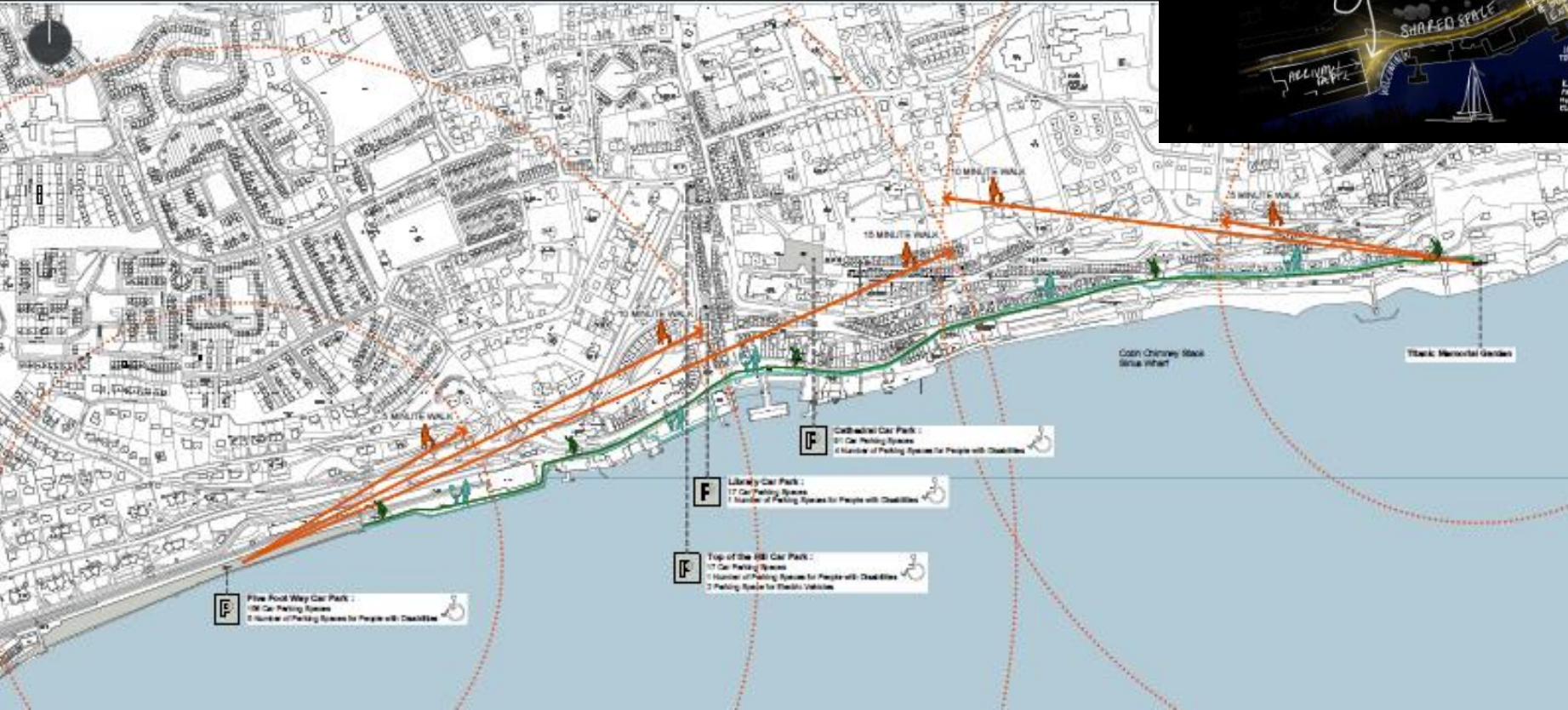
Project No.	100-1000	Sheet No.	001
Project Name	Parliament Buildings	Scale	1:1000
Project Manager	John Doe	Date	2023-10-27

Holistic Design Approach

Mobility Plan

Lighting supports urban design principles

- Permeability
- Integration
- Social interaction



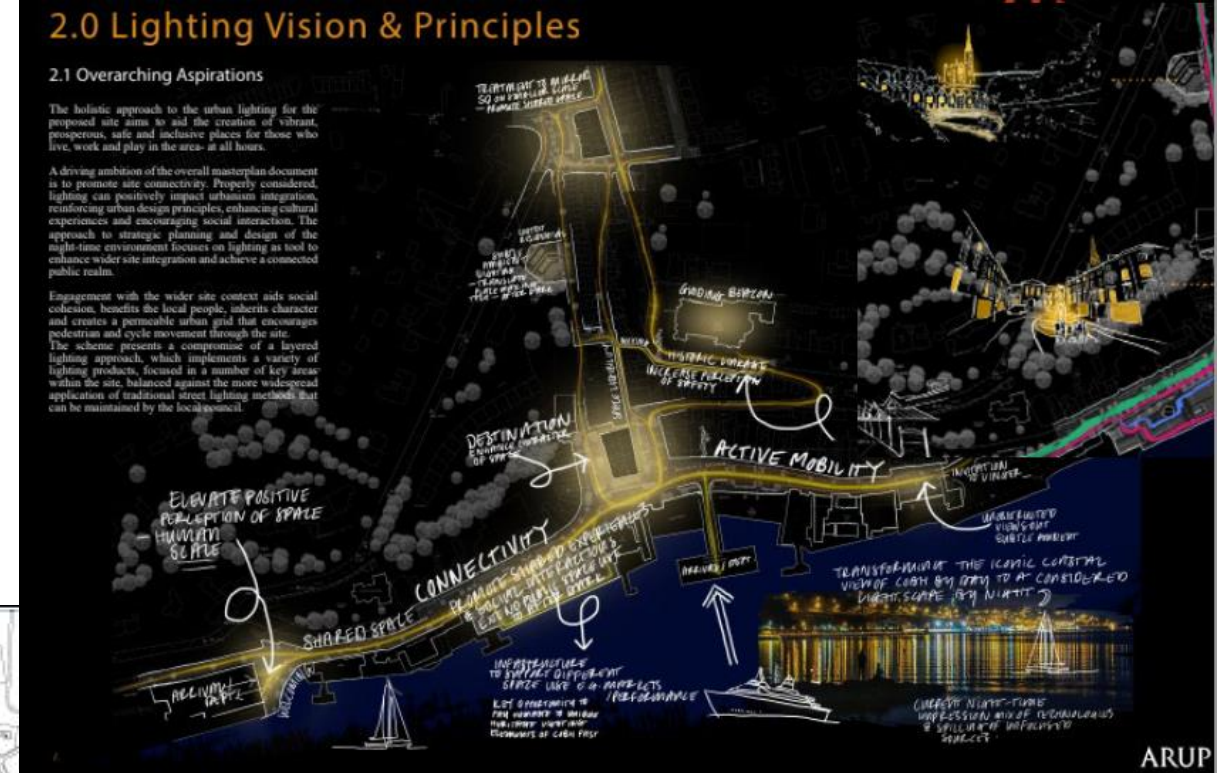
2.0 Lighting Vision & Principles

2.1 Overarching Aspirations

The holistic approach to the urban lighting for the proposed site aims to aid the creation of vibrant, prosperous, safe and inclusive places for those who live, work and play in the areas - at all hours.

A driving ambition of the overall masterplan document is to promote site connectivity. Properly considered, lighting can positively impact urbanism integration, reinforcing urban design principles, enhancing cultural experiences and encouraging social interaction. The approach to strategic planning and design of the night-time environment focuses on lighting as tool to enhance wider site integration and achieve a connected public realm.

Engagement with the wider site context aids social cohesion, benefits the local people, inherits character and creates a permeable urban grid that encourages pedestrian and cycle movement through the site. The scheme presents a compromise of a layered lighting approach, which implements a variety of lighting products, focused in a number of key areas within the site, balanced against the more widespread application of traditional street lighting methods that can be maintained by the local council.



Project Objectives

- **Regeneration Project**
- **Placemaking and heritage led**
- **Encourage socio economic redevelopment**
- **Pedestrian priority**
- **Inclusive design for all users**
- **Address well being / Covid issues**
- **Climate mitigation**



Design Audits

- **DMURS Street Design Audit**

- Connectivity
- Self regulating streets
- Pedestrian and cycling environment
- Visual quality

a mechanism to check against the DMURS guidance

template at www.dmurs.ie

- **Road Safety Audit**

- **Conservation Impact Audit**

- **Accessibility Audit**

Cycling audit?

Pedestrian audit (PERS or DCC space calculator)?

2. RE-EXAMINING THE STREET/CONTEXT (The Authenticity of the Place)		
Key principles	Key DMURS Reference.	Design Response
Historical maps and photographs from the Lawrence Collection were researched and identified to reflect the heritage of the full town centre.	2.1 The Need for Change	Start from the authenticity of the place including tangible and intangible heritage through desktop research and engagement with the community.
Key Issues: Cluttered town centre, loss of sense of place.		To provide a project brief to assess and address issues highlighted and through a holistic urban design approach, unlock the opportunities. This was done by working closely with a multitude of Cork County Council departments, the Cobh community and local stakeholders (such as, but not exhaustive, the Port of Cork, Fáilte Ireland, Department of Defence, Cobh Chamber of Commerce, Cobh Tidy Towns...) and applying DMURS principles in the town core.

COBH TOWN CENTRE PUBLIC REALM

CORK COUNTY COUNCIL NATIONAL ROAD DESIGN OFFICE

STAGE 1 ROAD SAFETY AUDIT ZONE 4 AND 5

APRIL

Cobh Town Centre Public Realm Conservation and Impact Assessment

March 2021



Issue: Loading bay on pedestrian desire line
Resolution: Relocate MID spaces, move loading bay
QA Recommendation: Bollard (hazard to MI users) removal and replacement with trees



Issue: Proposed raised planters blocking access from parking space to footpath
Resolution: Change to level raingardens with intermittent bridge access

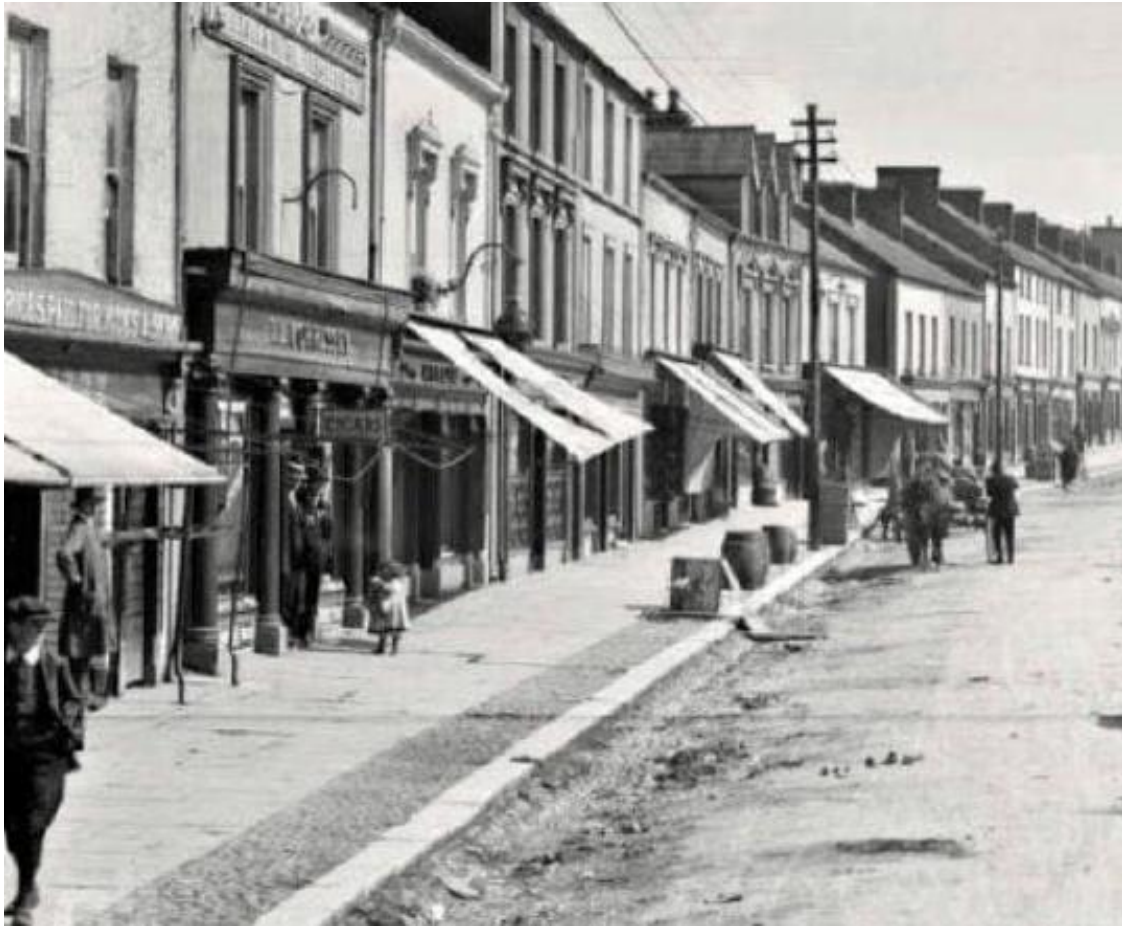




Conservation Report: Design Guidance

- **Historic Economy of Design**
- **Materials & Finishes**
 - Gravel & Hoggin
 - Cobbles, setts, kerbs
 - Flagstones, banding, fans
- **Street Furniture**





*With thanks to
Giula Vallone, Cork Capital Projects Implementation Unit;
John Hegarty, Conservation Architect;
Fiona Bohane, Cork National Road Design Office;
National Library of Ireland*

Conclusion

- **Clearly identify project objectives**
- **Audits appropriate to project**
- **DMURS is people centred design**
- **Stakeholder consultation is important**
- **Multi-disciplinary approach essential**
- **There are many ways to solve issues**
- **Use a two stage process**
- **Aim is to solve problems, while preserving project intent**