

NATIONAL ROADS AND GREENWAYS CONFERENCE 2023

Thursday 28th and Friday 29th September 2023



Midleton-Youghal Greenway: Experience & Update

*Will Downey
Cork County Council*



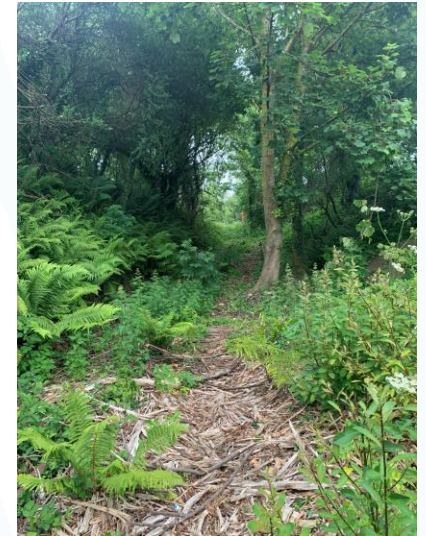
Project Overview

- Disused Midleton to Youghal railway line (23km)
- Connects Midleton, Mogeely, Killeagh & Youghal
- Developed under licence from Irish Rail
- Cycle and rail connectivity to Cork City
- Pathfinder Project



Getting Started

- Overgrown rail corridor
- Limited site information
- In-house team
- Procurement approach based on risk management



Early Works

- Site clearance and rail removal
- Enabling works
- Structures assessment
- Site investigation and drainage design



Drainage

- Review historic mapping
- Restore original drainage network
- Localised drainage works



Agricultural Accommodation

- Landowner liaison
- Accommodation of established crossings based on agriculture type:
 - Non-dairy: at-grade crossing
 - Dairy: segregated crossing



Agricultural Accommodation

At-grade Agricultural Crossings

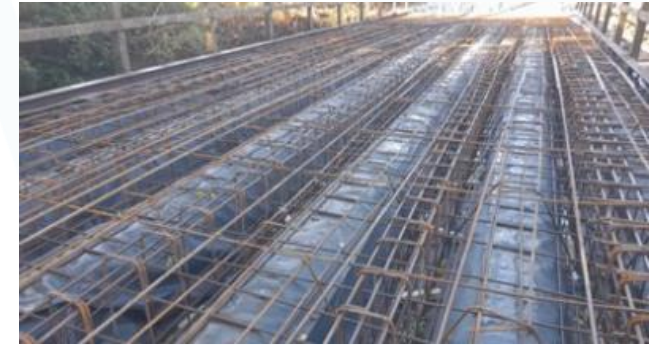


Agricultural Boundary Treatment



Structures

- Railway bridges and culverts
- Condition generally good
- Approach to retain and repair
- Deck replacement



Structures

Windblade Bridge

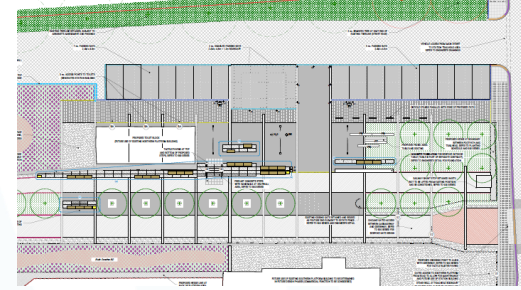


Youghal Turntable



Ongoing Activities

- Completion of main alignment
- Road crossings
- Trailheads and ancillary facilities
- Landscaping and boundary treatment
- Railway buildings



Ongoing Activities

- Naming, branding, promotion
- Signage
- Interpretation
- Linkages
- Maintenance and management

