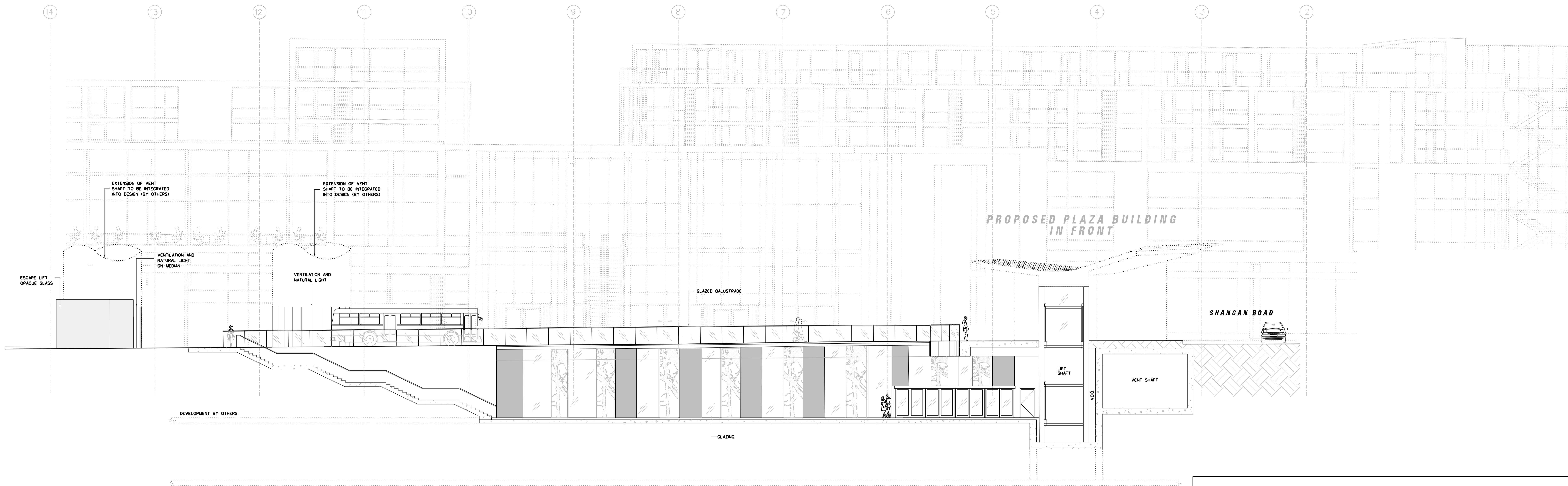
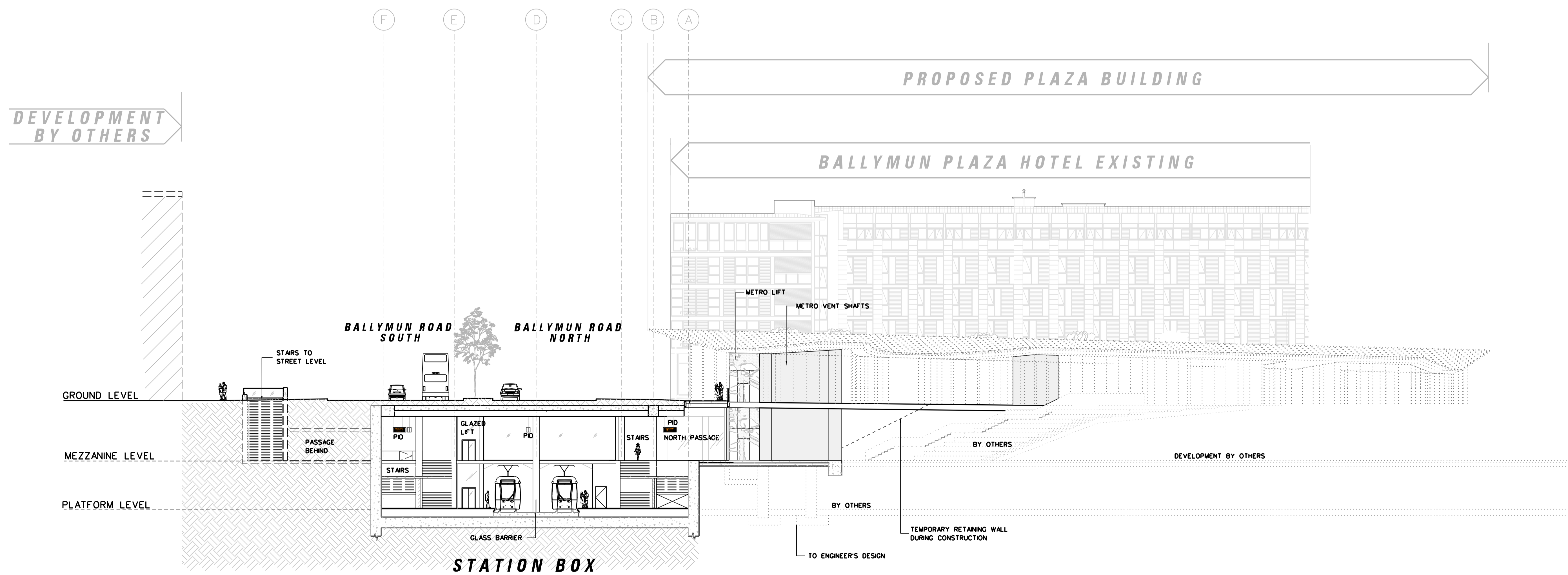


PROPOSED SHOPPING CENTRE



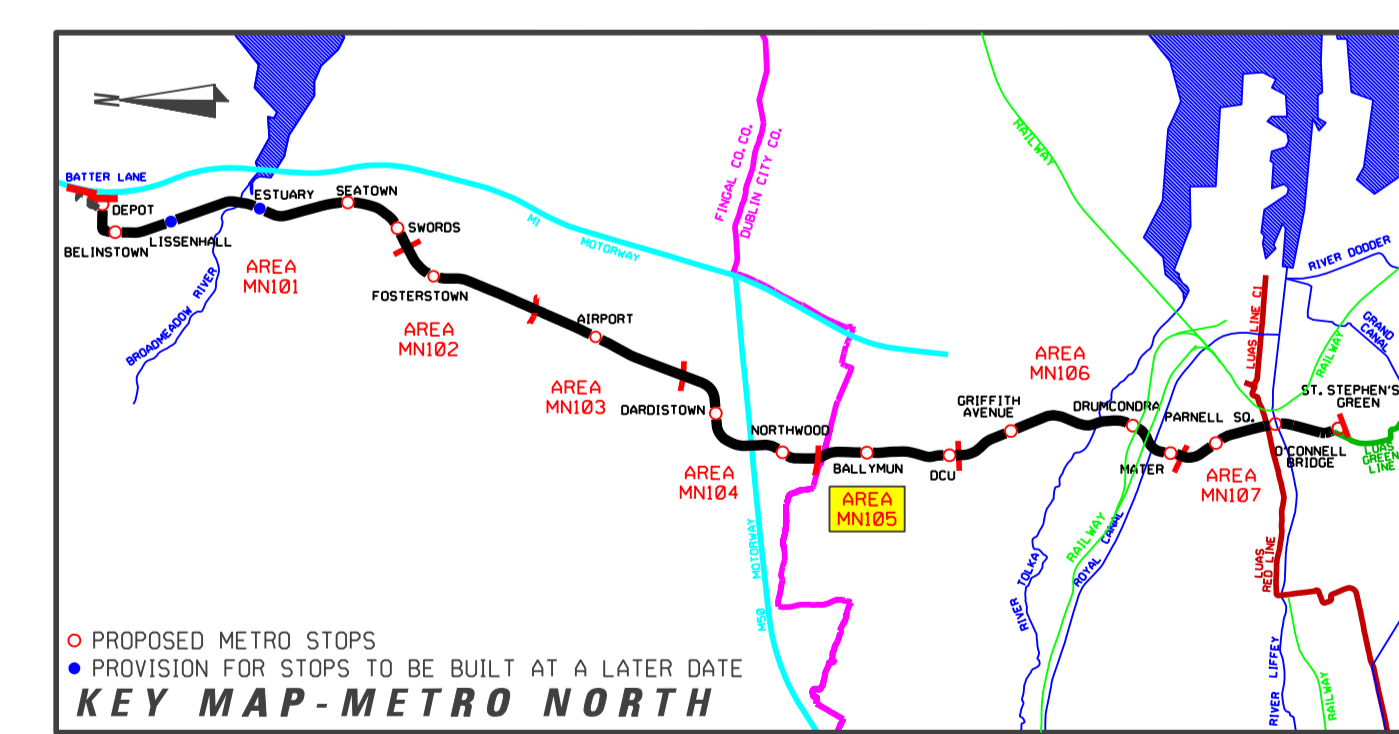
ELEVATION D-D
SCALE 1:100



CROSS SECTION C-C
SCALE 1:200

LEGEND

	GRANITE		EXISTING TREE
	GRANITE SETTS		EXISTING TREE REMOVED
	DETERRENT PAVING		NEW TREE
	EXISTING KERB REMOVED		EDGE PLANTING
	EXISTING BUILDING LINE		Tree Pit
	STRUCTURES TO BE REMOVED		HEDGE
	SWEEP PATH EDGE		LOW LYING GROUND COVER
	POLE SUPPORT		GRASS AREA
	DIRECTION OF TRAFFIC FLOW		PLATFORM - GRANITE SLABS



REVISION	DATE	MODIFICATION	STATUS	CHECKED/APPROVED

RPA Railway Procurement Agency

Orientation:
 Unit: Irish Standard
 Project: Business Centre
 District: Ballymun
 Phone: (01) 764 188
 Fax: (01) 764 181
 www.rpa.ie

METRO

RAILWAY WORKS
 LINE MN - STRUCTURES
 BALLYMUN STOP - SECTIONS C-C & D-D

PREPARED: RPA OFFICE	CHECKED: GEOFFREY FEATHERSTONE
SCALES: 1:200, 1:100	APPROVED: RORY O'CONNOR
DATE: AUGUST 2008	

AREA NO. 105	PLAN NO. MN-ST 105 A-B5	SUBJECT RAIL ORDER
------------------------	-----------------------------------	------------------------------

REFERENCE RELATED DRAWINGS

FOR 1:500 PLAN DRAWING SEE RAIL ORDER PLAN No.
 MN-RO 105 A-B(L/MN/000/GA/105002/A)

AND ALSO SEE

BALLYMUN STOP - STREET LEVEL PLAN	MN-ST 105 A-B1(L/MN/000/TO/105001/A)
BALLYMUN STOP - MEZZANINE PLAN	MN-ST 105 A-B2(L/MN/000/TO/105002/A)
BALLYMUN STOP - PLATFORM PLAN	MN-ST 105 A-B3(L/MN/000/TO/105003/A)
BALLYMUN STOP - SECTIONS A-A & B-B	MN-ST 105 A-B4(L/MN/000/TO/105004/A)

Copyright Railway Procurement Agency
 This drawing is confidential and the copyright in it is owned by the RPA. This drawing must not be either issued,
 copied or otherwise reproduced in whole or in part or used for any purpose without the prior permission of the RPA.
 All B.S. data used for plans is generated from B.S. digital data and are printed under Ordnance Survey permit no. 03.8817

INTERNAL DOCUMENT NUMBER	STAGE	LINE	CONTRACT	ELEMENT	DRW NO.	DRW REV.
	L	MN	000	TO	105005	A